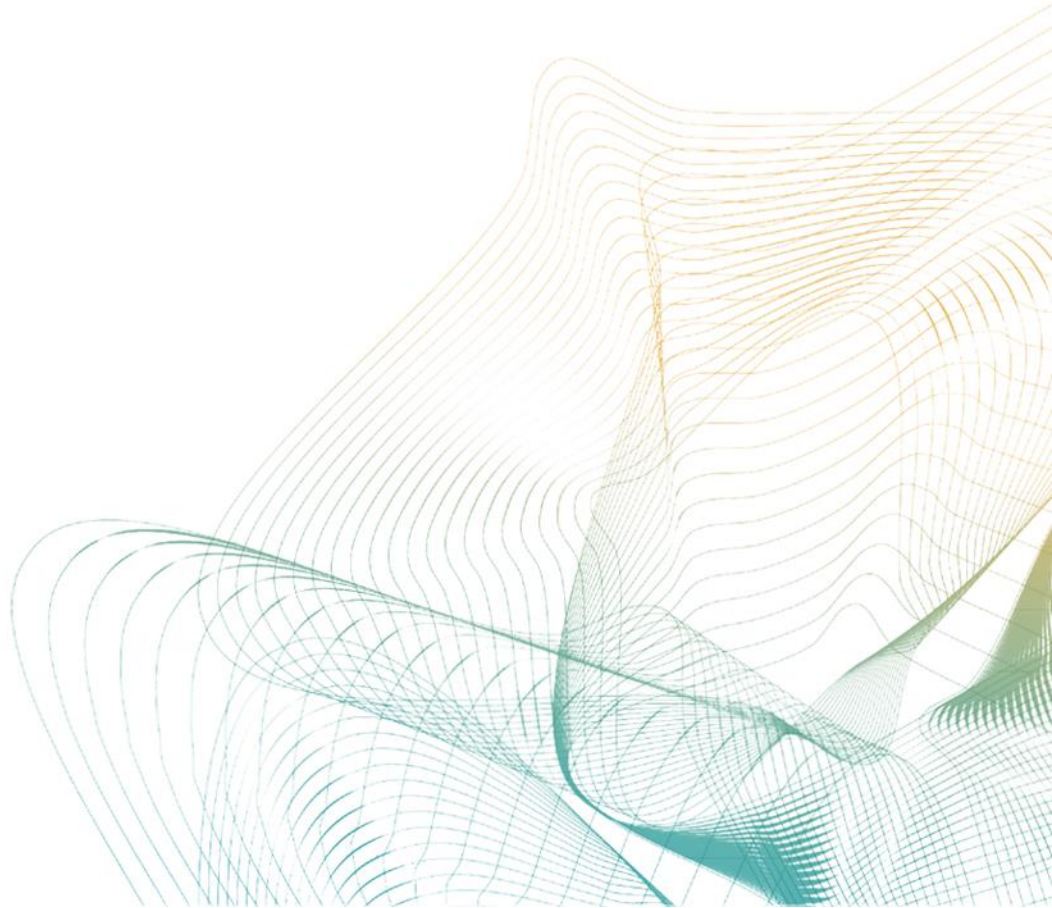




Residential Property Price Index

August 2019



Residential Property Price Index (RPPI)

In August 2019, RPPI increased monthly by **0.59** percent, recorded an annual increase of **4.00** percent in nominal terms and decreased by **9.57** percent in real terms.

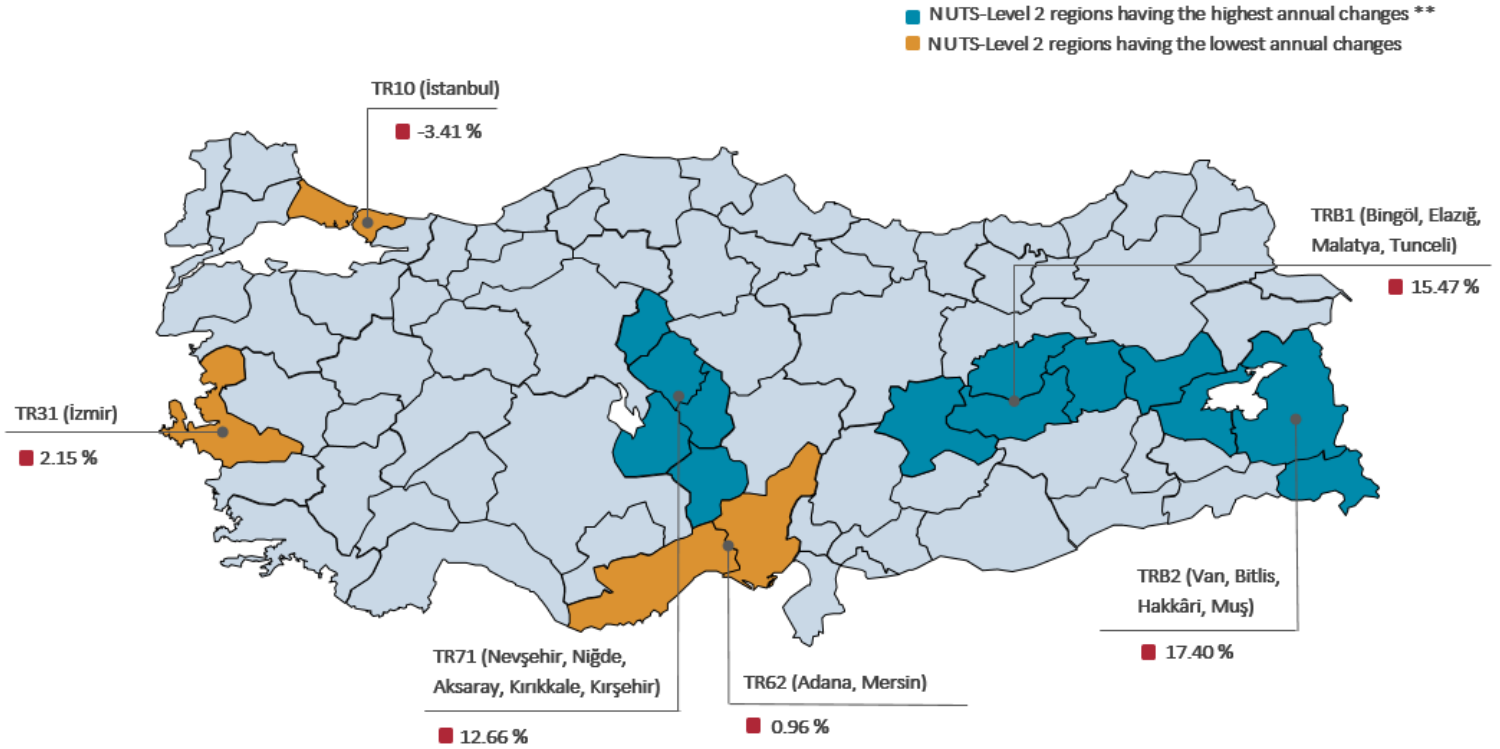


Table 1: Residential Property Price Indices and Unit Prices

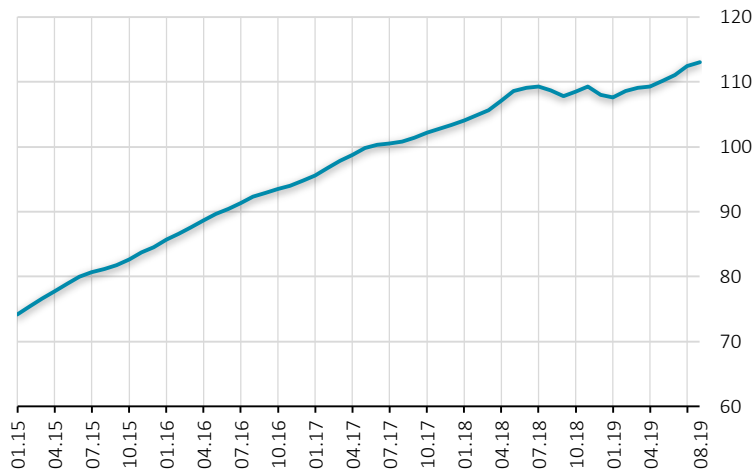
| | Residential Property Price Index | Residential Property Price Index for New Dwellings | Residential Property Price Index for Existing Dwellings | Unit Prices (TL/m ²)* |
|---|----------------------------------|--|---|-----------------------------------|
|  | 113.07 (4.00%) | 115.26 (6.01%) | 113.20 (4.02%) | 2794.14 ₺ |
|  | 98.72 (-3.41%) | 100.30 (-1.06%) | 99.26 (-3.63%) | 4664.37 ₺ |
|  | 110.60 (3.78%) | 117.64 (7.30%) | 110.01 (4.07%) | 2131.00 ₺ |
|  | 116.95 (2.15%) | 118.74 (3.37%) | 118.12 (3.21%) | 3233.92 ₺ |

*Square Meter Prices are constructed by using the **Stratified Median Price** method.

**Nomenclature of Territorial Units for Statistics (NUTS) Level 2 definitions are given in the Metadata note.

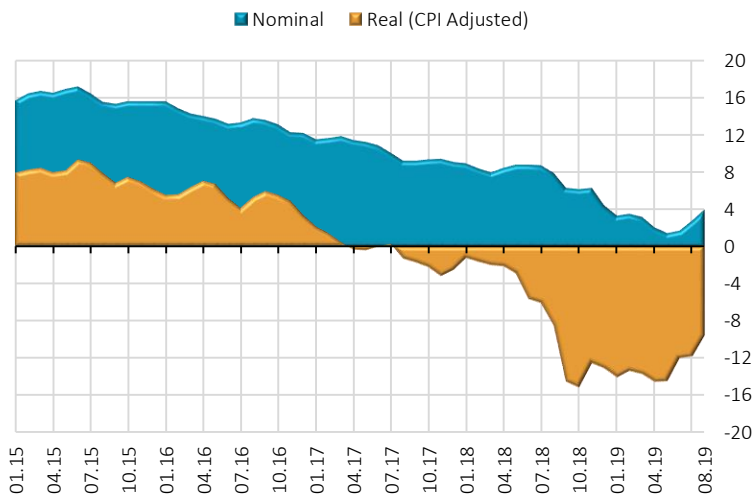
Figures in parentheses indicate annual percentage changes.

Graph 1: Residential Property Price Index (Level, 2017=100)



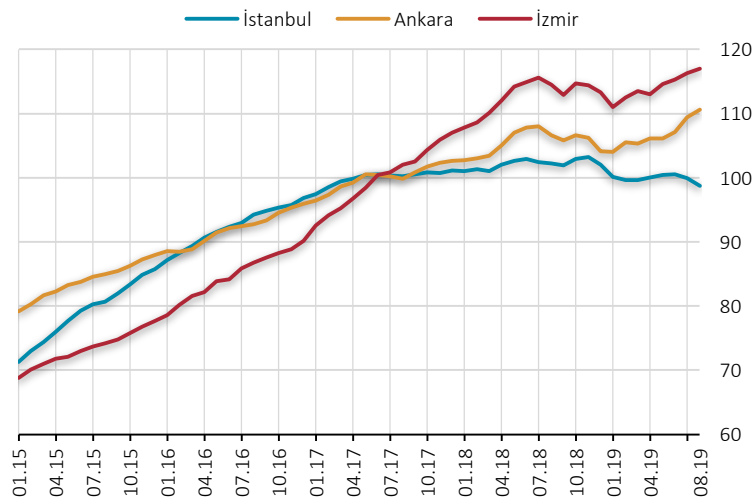
The Residential Property Price Index (RPPI) (2017=100), which measures quality adjusted price changes of houses in Turkey stands at **113.07** in August 2019 by a monthly increase of **0.59** percent.

Graph 2: Residential Property Price Index (Annual % Change)



The RPPI increased annually by **4.00** percent in nominal terms and decreased by **9.57** percent in real terms.

Graph 3: Residential Property Price Index for Three Major Cities (Level, 2017=100)



In August 2019, the RPPI decreased monthly by **1.21** percent in İstanbul and increased by **1.05** and **0.59** percent in Ankara and İzmir respectively. İstanbul recorded an annual decrease of **3.41** percent and Ankara and İzmir recorded an annual increase of **3.78** and **2.15** percent respectively.