

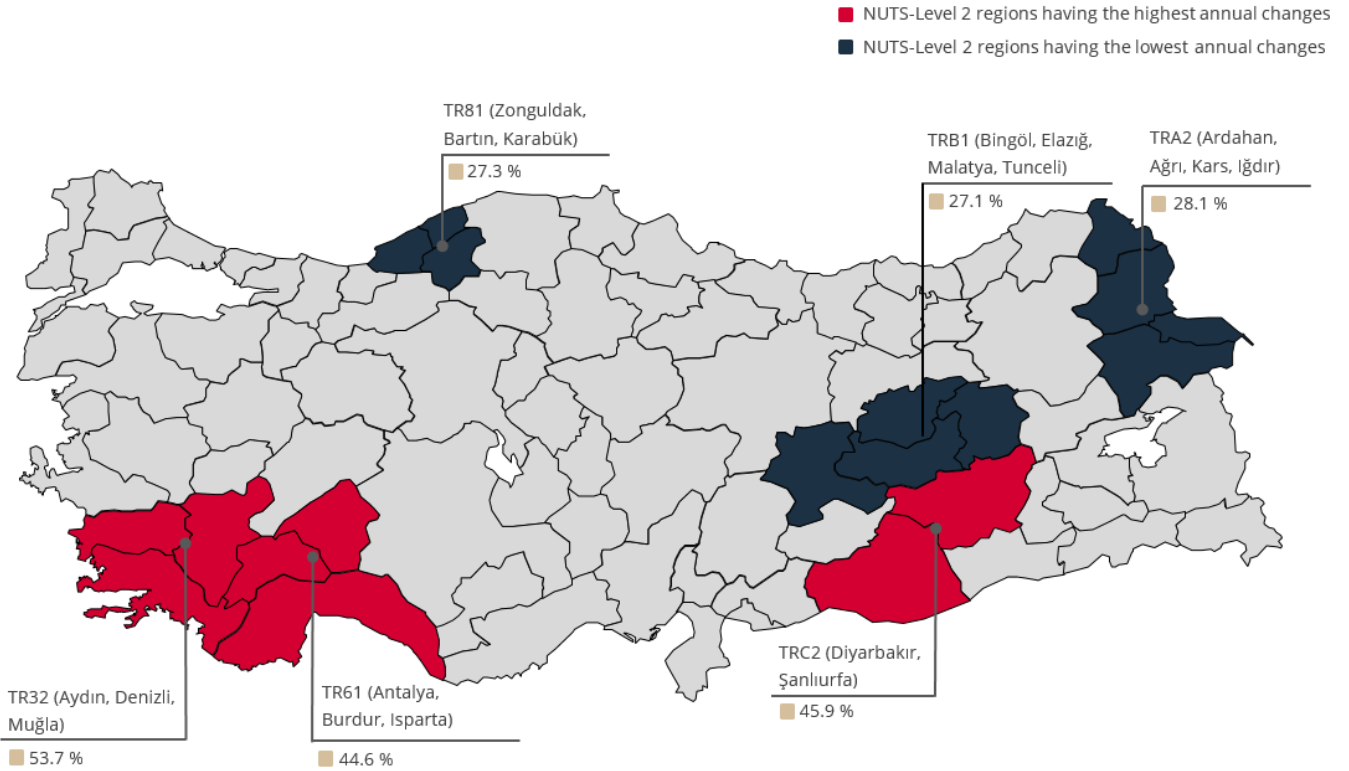


# RESIDENTIAL PROPERTY PRICE INDEX

DATA GOVERNANCE AND  
STATISTICS DEPARTMENT  
SURVEYS AND INDICES DIVISION  
SEPTEMBER 2021

## Residential Property Price Index (RPPI)

In September 2021, RPPI increased monthly by **3.2** percent, recorded an annual increase of **35.5** percent in nominal terms and **13.3** percent in real terms.



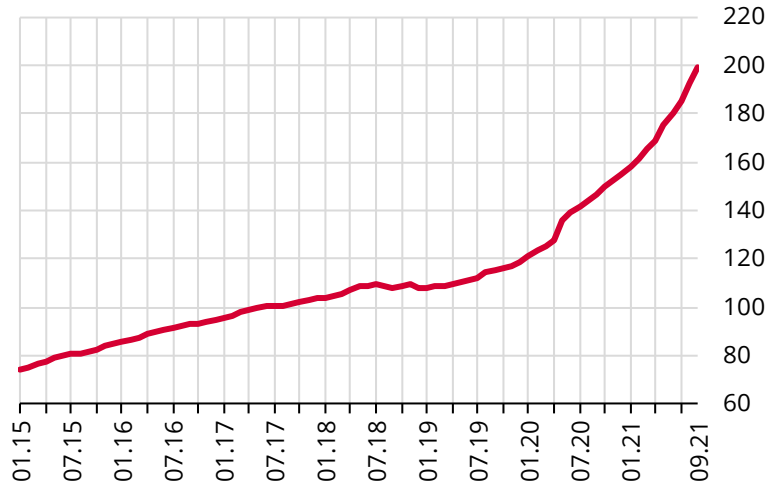
**Table 1: Residential Property Price Indices (2017=100) and Unit Prices**

	Residential Property Price Index	Residential Property Price Index for New Dwellings	Residential Property Price Index for Existing Dwellings	Unit Prices (TL/m <sup>2</sup> )*
	198.8 (35.5%)	215.6 (43.5%)	195.4 (33.9%)	5011.2 ₺
	170.0 (32.6%)	185.5 (39.1%)	169.1 (32.0%)	7528.2 ₺
	185.9 (30.9%)	228.6 (46.5%)	181.2 (28.9%)	3631.8 ₺
	208.2 (34.8%)	217.1 (39.3%)	205.3 (32.8%)	6076.7 ₺

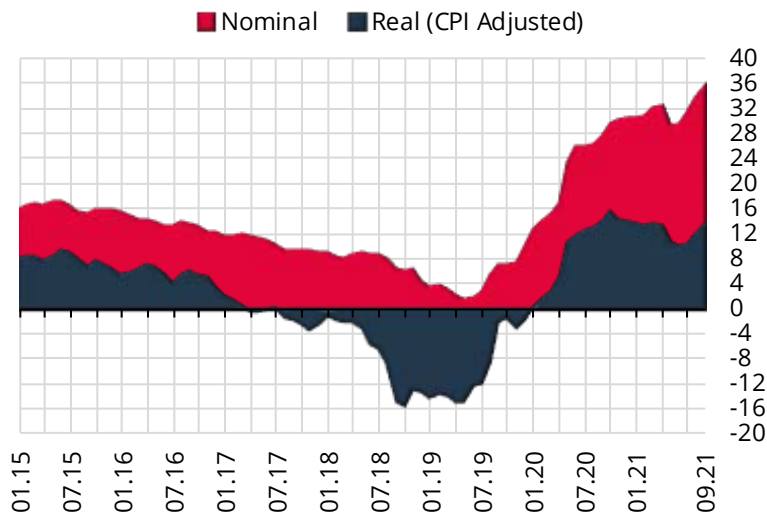
\*Square Meter Prices are constructed by using the **Stratified Median Price** method.

Figures in parentheses indicate annual percentage changes.

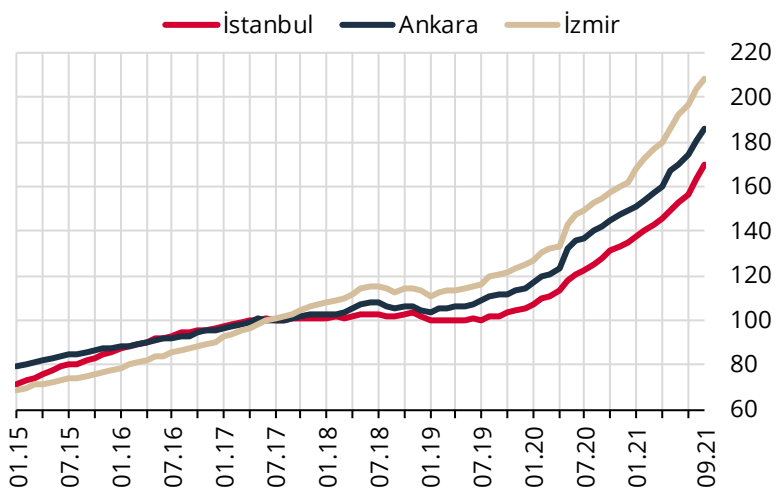
Residential Property Price Index has been published as part of the "Official Statistics Programme (OSP)".

**Graph 1: Residential Property Price Index (Level, 2017=100)**

The Residential Property Price Index (RPPI) (2017=100), which measures quality adjusted price changes of dwellings in Turkey stands at **198.8** in September 2021 by a monthly increase of **3.2** percent.

**Graph 2: Residential Property Price Index (Annual % Change)**

The RPPI increased annually by **35.5** percent in nominal terms and by **13.3** percent in real terms.

**Graph 3: Residential Property Price Index for Three Major Cities (Level, 2017=100)**

In September 2021, the RPPI increased monthly by **4.0**, **3.2** and **2.0** percent in İstanbul, Ankara and İzmir respectively. İstanbul, Ankara and İzmir recorded an annual increase of **32.6**, **30.9** and **34.8** percent respectively.