



RESIDENTIAL PROPERTY PRICE INDEX

DATA GOVERNANCE AND
STATISTICS DEPARTMENT
SURVEYS AND INDICES DIVISION
DECEMBER 2020

Residential Property Price Index (RPPI)

In December 2020, RPPI increased monthly by **1.7** percent, recorded an annual increase of **30.3** percent in nominal terms and **13.7** percent in real terms.

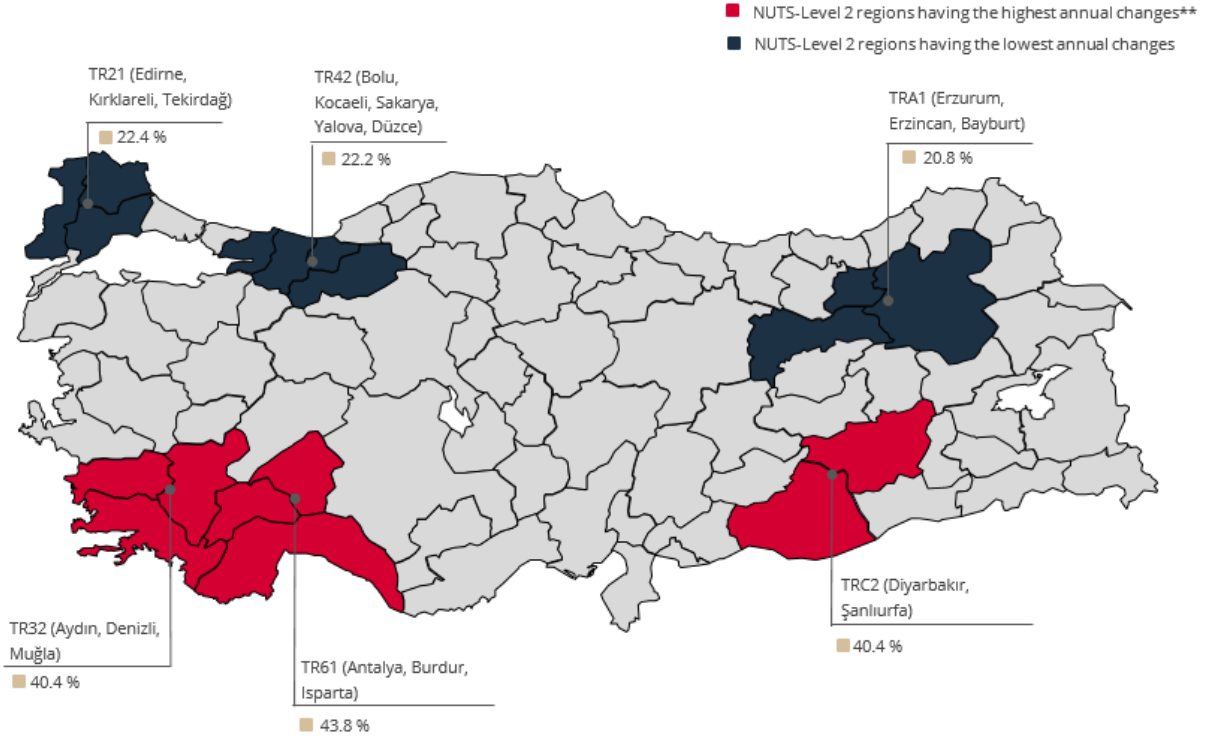
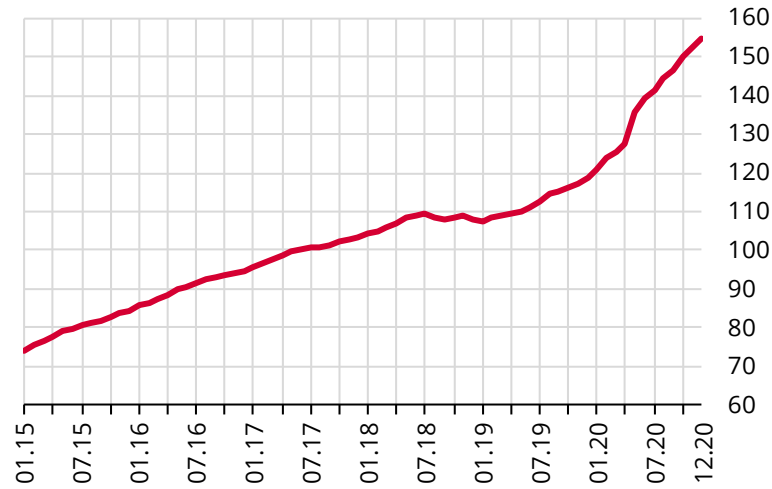


Table 1: Residential Property Price Indices (2017=100) and Unit Prices

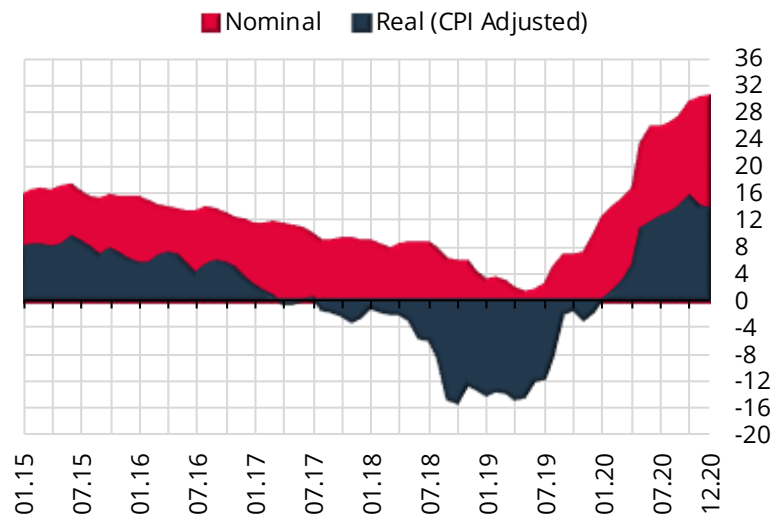
	Residential Property Price Index	Residential Property Price Index for New Dwellings	Residential Property Price Index for Existing Dwellings	Unit Prices (TL/m ²)*
	154.8 (30.3%)	160.7 (31.6%)	153.5 (30.2%)	3887.5 ₺
	135.2 (27.9%)	138.5 (26.8%)	135.1 (28.7%)	6483.8 ₺
	149.3 (30.2%)	170.7 (37.1%)	146.2 (28.7%)	2895.2 ₺
	161.8 (29.4%)	168.9 (34.6%)	162.5 (29.4%)	4505.8 ₺

*Square Meter Prices are constructed by using the **Stratified Median Price** method.

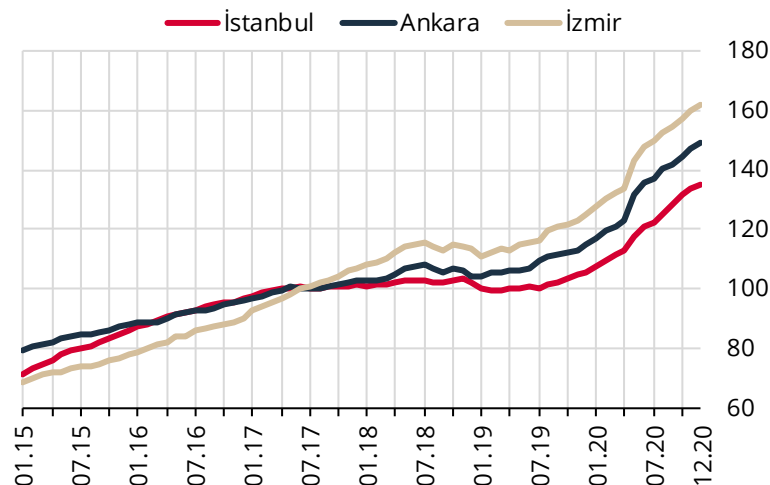
**Nomenclature of Territorial Units for Statistics (NUTS) Level 2 definitions are given in the Metadata note. Figures in parentheses indicate annual percentage changes.

Graph 1: Residential Property Price Index (Level, 2017=100)

The Residential Property Price Index (RPPI) (2017=100), which measures quality adjusted price changes of dwellings in Turkey stands at **154.8** in December 2020 by a monthly increase of **1.7** percent.

Graph 2: Residential Property Price Index (Annual % Change)

The RPPI increased annually by **30.3** percent in nominal terms and by **13.7** percent in real terms.

Graph 3: Residential Property Price Index for Three Major Cities (Level, 2017=100)

In December 2020, the RPPI increased monthly by **1.3**, **1.4** and **1.2** percent in İstanbul, Ankara and İzmir respectively. İstanbul, Ankara and İzmir recorded an annual increase of **27.9**, **30.2** and **29.4** percent respectively.